

801 Warrenville Road

Suite 260

801 Warrenville Road

Lisle, IL 60532

HAMILTON PARTNERS
www.hamiltonpartners.com



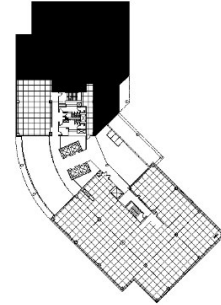
DETAILS

Square Feet: 10,439 S.F.
Net Rent: \$14.50/S.F.
OP. Expense: \$7.94/S.F.
Tax: \$2.84/S.F.
Gross Rent: \$26.35/S.F.

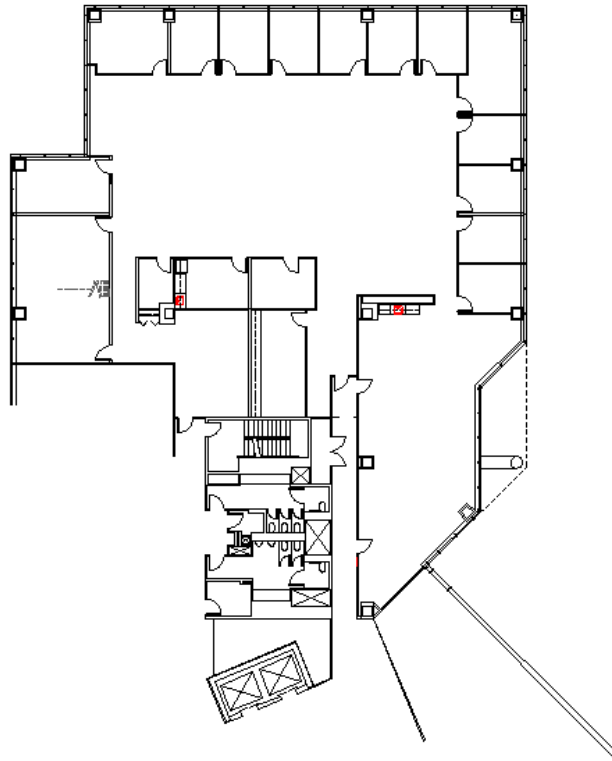
SUITE FEATURES

- Incredible new opportunity at 801!
- Two glass entries providing for strong identity on second floor
- 16 private offices
- Great mix of open space and private offices
- Two kitchens within the premises
- Large training room with folding partition
- Beautiful views of pond and landscaping

SECOND FLOOR PLAN



SPACE PLAN



HAMILTON PARTNERS - Sponsoring Broker

David Andrews

✉ da@hpre.com

C 6303270566

Philip Sheridan

✉ phil_sheridan@hpre.com

P 6307195567
C 6303032108

Paul O'Connor

✉ poconnor@hamiltonpartners.com

C 6309210142