

801 Warrenville Road

Suite 110

801 Warrenville Rd, Lisle, IL 60532

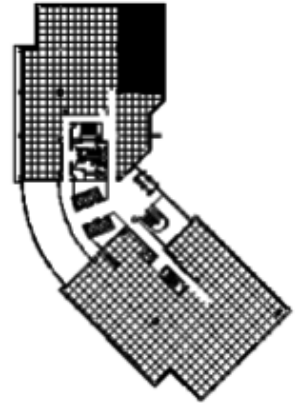
HAMILTON PARTNERS
www.hamiltonpartners.com



SUITE FEATURES

- Available Immediately!
- Corner location
- Three window private offices with sidelites
- Full kitchen
- Glass entry door at end of hallway
- Glass walled conference room

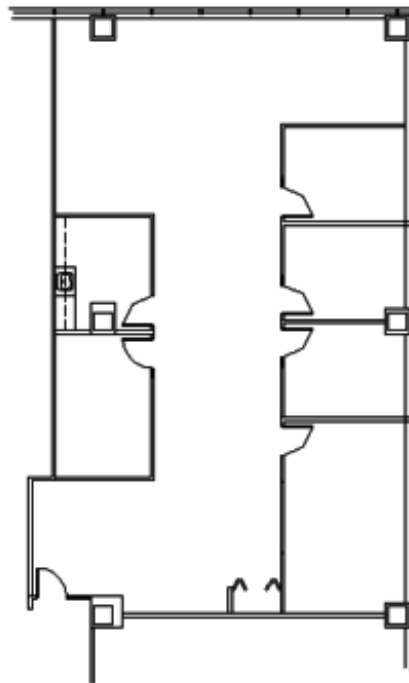
FIRST FLOOR PLAN



DETAILS

Square Feet: 2,808 S.F.
Net Rent: \$14.50/S.F.
OP. Expense: \$8.30/S.F.
Tax: \$2.84/S.F.
Gross Rent: \$26.35/S.F.

SPACE PLAN



HAMILTON PARTNERS - Sponsoring Broker

David Andrews

[✉ da@hpre.com](mailto:da@hpre.com)

C 6303270566

Philip Sheridan

[✉ phil_sheridan@hpre.com](mailto:phil_sheridan@hpre.com)

P 6307195567

C 6303032108