

Suite 280  
3500 Lacey Road  
Downers Grove, IL 60515

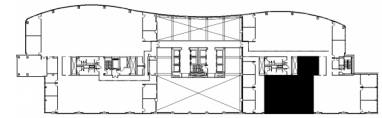
## DETAILS

**Square Feet:** 3,470 S.F.  
**Net Rent:** \$21.00/S.F.  
**OP. Expense:** \$9.21/S.F.  
**Tax:** \$2.17/S.F.  
**Gross Rent:** \$32.38/S.F.

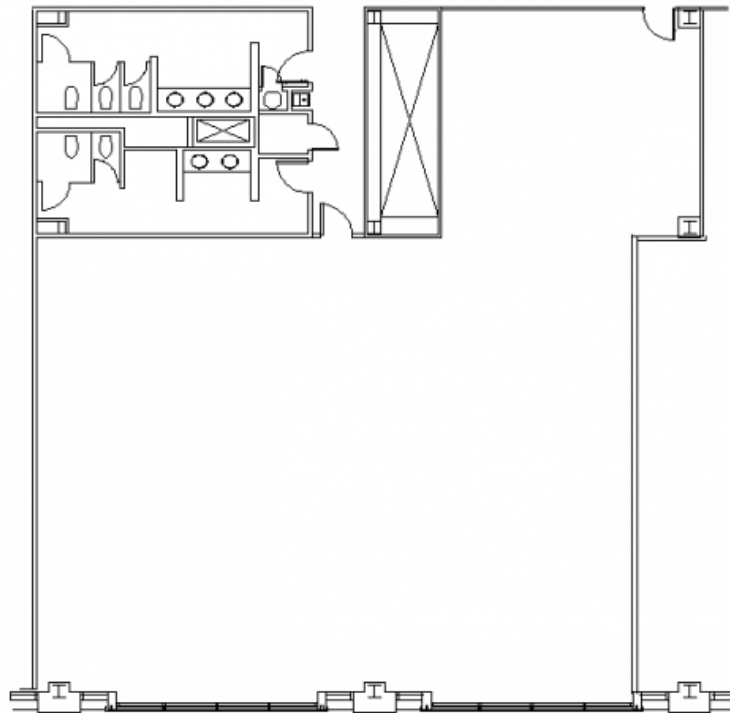
## SUITE FEATURES

- Beautiful glass entry
- 50 lineal feet of window line
- Tons of natural light
- Large open area for cubes
- Ready to be customized for your office needs!

## SECOND FLOOR PLAN



## SPACE PLAN



## HAMILTON PARTNERS - Sponsoring Broker

**David Andrews**

✉ [da@hpre.com](mailto:da@hpre.com)

C 6303270566

**Philip Sheridan**

✉ [phil\\_sheridan@hpre.com](mailto:phil_sheridan@hpre.com)

P 6307195567  
C 6303032108

**Paul O'Connor**

✉ [poconnor@hamiltonpartners.com](mailto:poconnor@hamiltonpartners.com)

C 6309210142