

701 Warrenville Road

Suite 200 & 210

701 Warrenville Road, Lisle, IL 60532

HAMILTON PARTNERS
www.hamiltonpartners.com



DETAILS

Square Feet: 9,715 S.F.

Net Rent: \$13.75/S.F.

OP. Expense: \$9.62/S.F.

Tax: \$2.29/S.F.

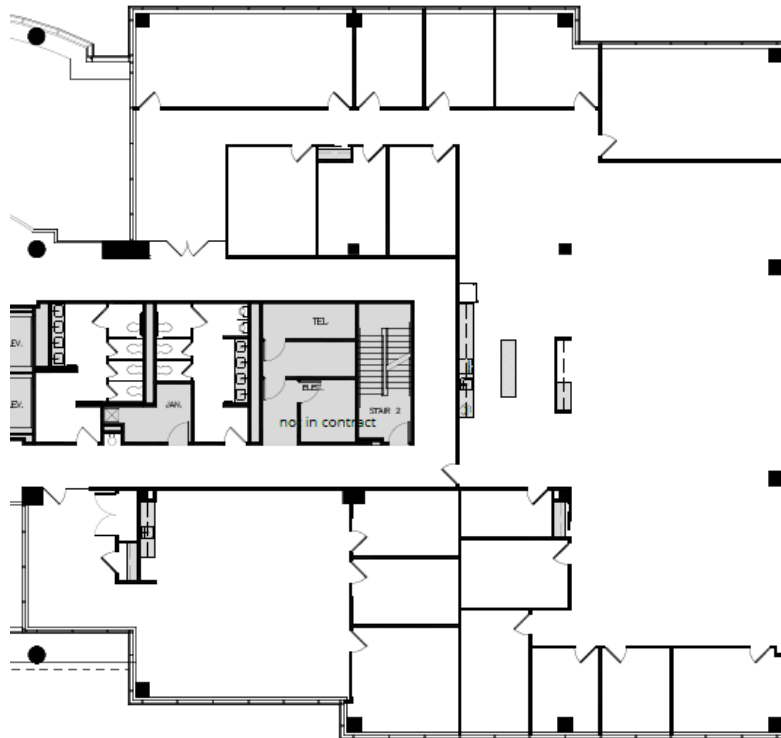
Gross Rent: \$25.66/S.F.

SUITE FEATURES

- Terrific open space ready to be customized for your office!
- 15 existing private offices
- Flexible space planning in open space
- Opportunity for up to 14 corner offices
- Beautiful views of landscaping
- Heated executive parking in the building

SECOND FLOOR PLAN

SPACE PLAN



HAMILTON PARTNERS - Sponsoring Broker

Philip Sheridan

phil_sheridan@hpre.com

P 6307195567

C 6303032108