

3250 Lacey Road
Suite 100, 105 & 110
3250 Lacey Road
Downers Grove, IL 60515



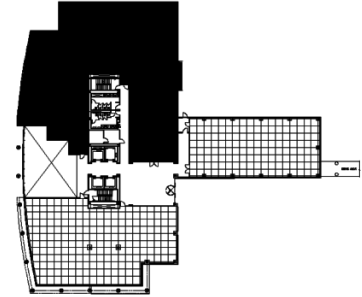
DETAILS

Square Feet: 10,591 S.F.
Net Rent: \$19.75/S.F.
OP. Expense: \$10.27/S.F.
Tax: \$2.44/S.F.
Gross Rent: \$32.46/S.F.

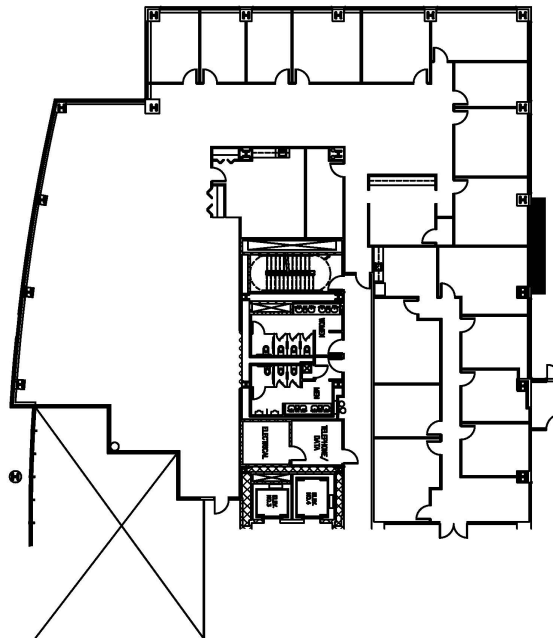
SUITE FEATURES

- Entire western wing now available!
- Beautiful views of lake and landscaping
- Reception area with glass entry in the building lobby
- 18 private offices
- Large board room
- Eat-in kitchen
- IT Room
- Manned security in lobby
- Esplanade at Locust Point Amenities 9.24.19

FIRST FLOOR PLAN



SPACE PLAN



HAMILTON PARTNERS - Sponsoring Broker

David Andrews

✉ da@hpre.com

C 6303270566

Philip Sheridan

✉ phil_sheridan@hpre.com

P 6307195567

C 6303032108