

701 Warrenville Road

Suite 200-300

701 Warrenville Road, Lisle, IL 60532

HAMILTON PARTNERS
www.hamiltonpartners.com



SUITE FEATURES

- The best large block value in the E/W Corridor!
- Building signage and monument signage available
- Heated executive parking lot
- Beautifully rehabbed lobby and atrium
- Incredible landscaping and peaceful location

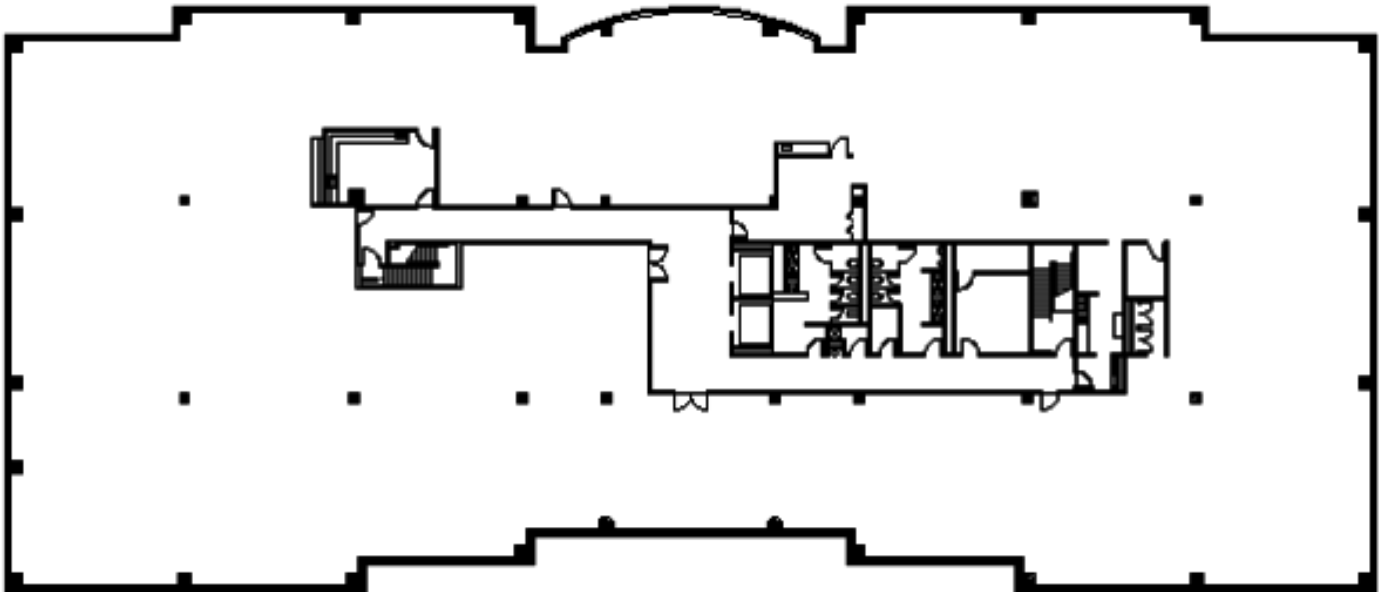
Third FLOOR PLAN



DETAILS

Square Feet: 24,857 S.F.
Net Rent: \$13.75/S.F.
OP. Expense: \$7.99/S.F.
Tax: \$2.29/S.F.
Gross Rent: \$25.66/S.F.

SPACE PLAN



HAMILTON PARTNERS - Sponsoring Broker

David Andrews

✉ da@hpre.com

C 6303270566

Philip Sheridan

✉ phil_sheridan@hpre.com

P 6307195567

C 6303032108