

**2001 Butterfield Road**  
Suite 256 & 260  
2001 Butterfield Road  
Downers Grove, IL 60515



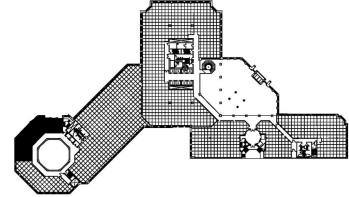
### DETAILS

**Square Feet:** 2,518 S.F.  
**Net Rent:** \$19.75/S.F.  
**OP. Expense:** \$9.55/S.F.  
**Tax:** \$2.67/S.F.  
**Gross Rent:** \$31.97/S.F.

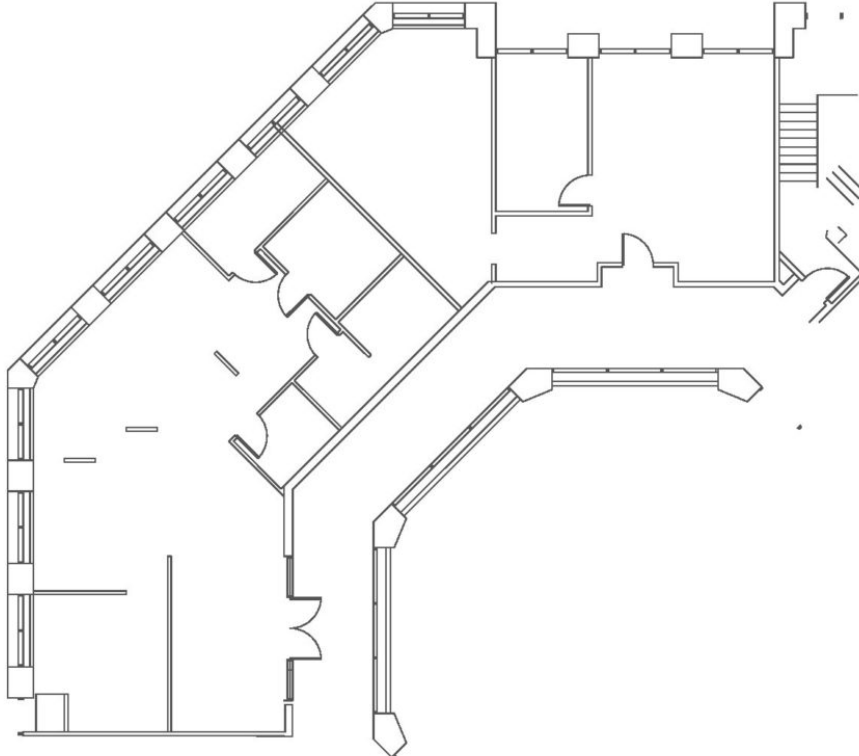
### SUITE FEATURES

- Unique space now available in the Rotunda of the building
- Easy access to the premises from stairwells allows tenants to avoid using elevators
- Close proximity to amenities including restaurants, health club, hotel and Starbucks
- Esplanade at Locust Point Amenities 9.24.19

### SECOND FLOOR PLAN



### SPACE PLAN



**HAMILTON PARTNERS - Sponsoring Broker**

**David Andrews**

✉ [da@hpre.com](mailto:da@hpre.com)

C 6303270566

**Philip Sheridan**

✉ [phil\\_sheridan@hpre.com](mailto:phil_sheridan@hpre.com)

P 6307195567

C 6303032108