

1011 Warrenville Road

Suite 150 & 160

1011 Warrenville Road, Lisle, IL 60532

HAMILTON PARTNERS  
www.hamiltonpartners.com



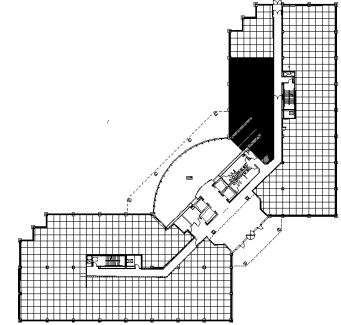
## DETAILS

**Square Feet:** 2,780 S.F.  
**Net Rent:** \$15.75/S.F.  
**OP. Expense:** \$8.67/S.F.  
**Tax:** \$2.95/S.F.  
**Gross Rent:** \$28.08/S.F.

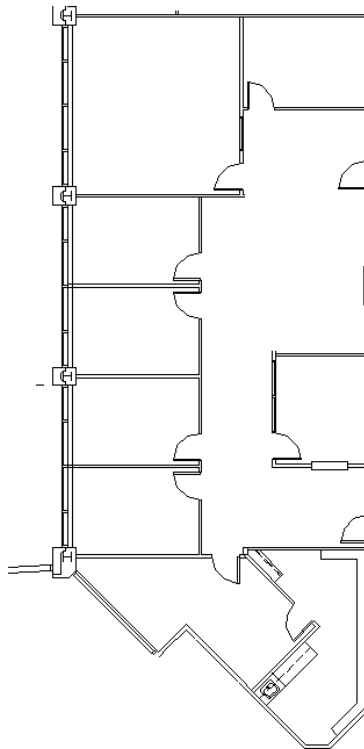
## SUITE FEATURES

- [Click here for Virtual Tour of 150](#)
- [Click here for Virtual Tour of 160](#)
- Beautiful first floor space available immediately
- Second floor pond/atrium views
- 6 private offices
- Kitchen
- Workroom
- Large conference room

## FIRST FLOOR PLAN



## SPACE PLAN



## HAMILTON PARTNERS - Sponsoring Broker

**David Andrews**

[da@hpre.com](mailto:da@hpre.com)

C 6303270566

**Philip Sheridan**

[phil\\_sheridan@hpre.com](mailto:phil_sheridan@hpre.com)

P 6307195567

C 6303032108