

1011 Warrenville Road

Suite 10

1011 Warrenville Road, Lisle, IL 60532

[Click for Virtual Tour](#)

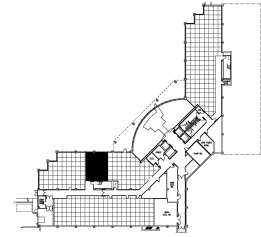
HAMILTON PARTNERS
www.hamiltonpartners.com



SUITE FEATURES

- Beautiful space with lake view available immediately
- Open space
- Workroom/break room
- Direct access to covered parking and deli

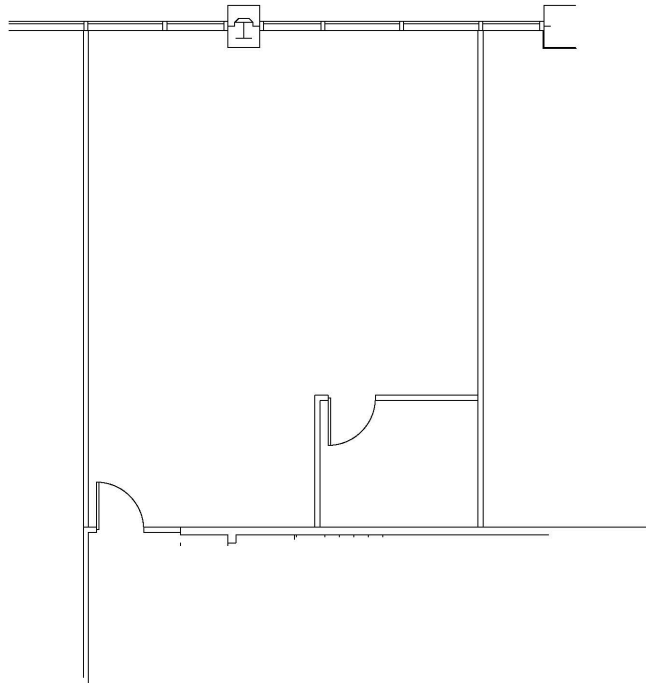
LAKE LEVEL FLOOR PLAN



DETAILS

Square Feet: 930 S.F.
Net Rent: \$15.75/S.F.
OP. Expense: \$9.53/S.F.
Tax: \$2.80/S.F.
Gross Rent: \$28.08/S.F.

SPACE PLAN



HAMILTON PARTNERS - Sponsoring Broker

David Andrews

✉ da@hpre.com

C 6303270566

Philip Sheridan

✉ phil_sheridan@hpre.com

P 6307195567

C 6303032108