

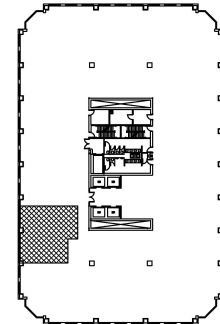
2001 Butterfield Road
Suite 1525
Downers Grove, IL 60515



SUITE FEATURES

- View Amenities
- Corner suite with 15th floor views!
- Nice entry near elevator lobby
- 3 private offices
- Customize space to meet Tenant's specific needs

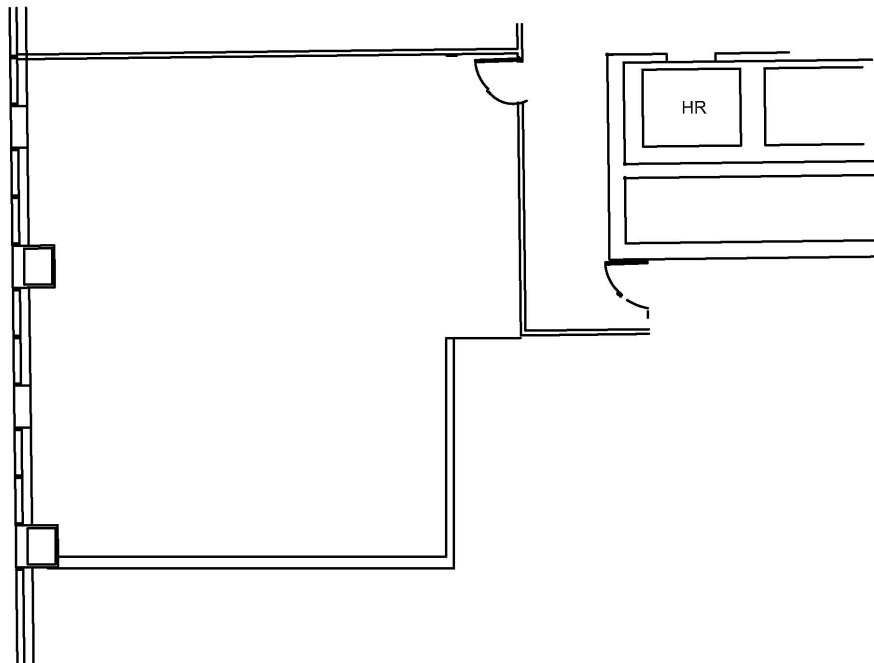
FIFTEENTH FLOOR PLAN



DETAILS

Square Feet: 1,521 S.F.
Net Rent: \$19.75/S.F.
OP. Expense: \$10.03/S.F.
Tax: \$2.57/S.F.
Gross Rent: \$32.35/S.F.

SPACE PLAN



HAMILTON PARTNERS - Sponsoring Broker

Philip Sheridan

✉ phil_sheridan@hpre.com

P 6307195567

C 6303032108

David Andrews

✉ da@hpre.com

C 6303270566