

2001 Butterfield Road  
Suite 600  
Downers Grove, IL 60515



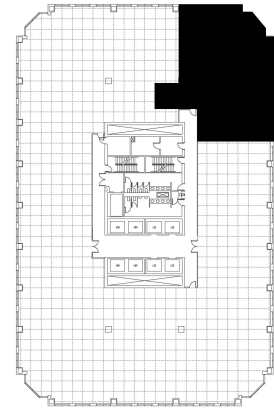
### DETAILS

**Square Feet:** 3,571 S.F.  
**Net Rent:** \$19.75/S.F.  
**OP. Expense:** \$10.53/S.F.  
**Tax:** \$2.32/S.F.  
**Gross Rent:** \$32.60/S.F.

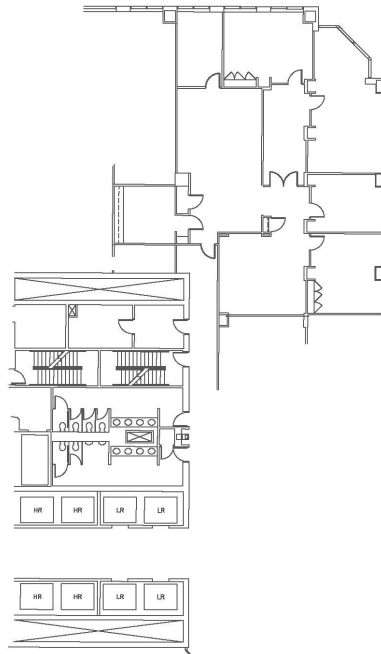
### SUITE FEATURES

- View Amenities
- Glass entry in elevator lobby
- Very high-end finishes throughout with luxurious details
- 9 private offices with full demising walls
- Kitchen within space
- Glass doors to every office
- Large and small conference room
- Beautiful views with floor to ceiling windows

### SIXTH FLOOR PLAN



### SPACE PLAN



### HAMILTON PARTNERS - Sponsoring Broker

**David Andrews**

✉ [da@hpre.com](mailto:da@hpre.com)

C 6303270566

**Philip Sheridan**

✉ [phil\\_sheridan@hpre.com](mailto:phil_sheridan@hpre.com)

P 6307195567

C 6303032108