

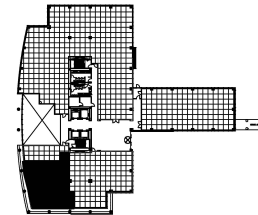
3250 Lacey Road
Suite 161
3250 Lacey Road
Downers Grove, IL 60515



SUITE FEATURES

- Beautiful landscape & view of Morton Arboretum
- 3 private offices
- Conference room
- Kitchen
- Manned security in lobby

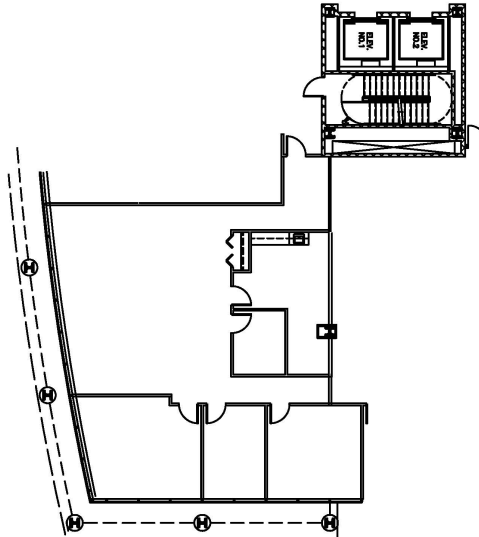
FIRST FLOOR PLAN



DETAILS

Square Feet: 2,446 S.F.
Net Rent: \$19.75/S.F.
OP. Expense: \$11.11/S.F.
Tax: \$2.55/S.F.
Gross Rent: \$33.41/S.F.

SPACE PLAN



HAMILTON PARTNERS - Sponsoring Broker

David Andrews

✉ da@hpre.com

C 6303270566

Philip Sheridan

✉ phil_sheridan@hpre.com

P 6307195567

C 6303032108