

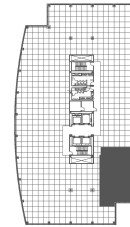
3250 Lacey Road  
Suite 430  
3250 Lacey Road  
Downers Grove, IL 60515



### SUITE FEATURES

- Rectangle space with corner window-line
- 6 private offices
- Entry near elevators

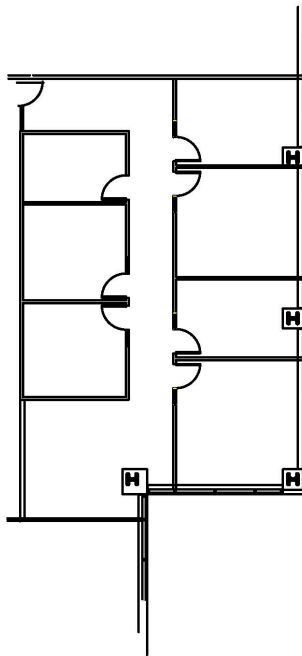
### FOURTH FLOOR PLAN



### DETAILS

**Square Feet:** 2,181 S.F.  
**Net Rent:** \$19.75/S.F.  
**OP. Expense:** \$11.11/S.F.  
**Tax:** \$2.55/S.F.  
**Gross Rent:** \$33.41/S.F.

### SPACE PLAN



### HAMILTON PARTNERS - Sponsoring Broker

**David Andrews**

✉ [da@hpre.com](mailto:da@hpre.com)

C 6303270566

**Philip Sheridan**

✉ [phil\\_sheridan@hpre.com](mailto:phil_sheridan@hpre.com)

P 6307195567

C 6303032108