

2001 Butterfield Road  
Suite 1115  
2001 Butterfield Road  
Downers Grove, IL 60515



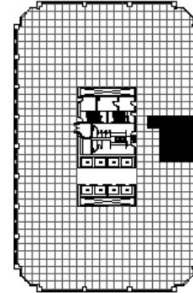
### DETAILS

**Square Feet:** 1,034 S.F.  
**Net Rent:** \$19.75/S.F.  
**OP. Expense:** \$10.03/S.F.  
**Tax:** \$2.57/S.F.  
**Gross Rent:** \$32.35/S.F.

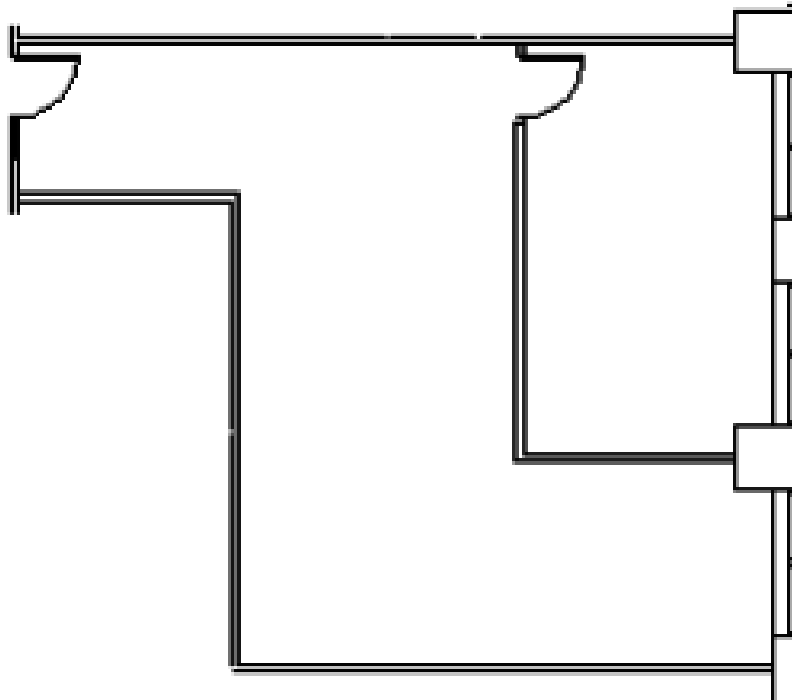
### SUITE FEATURES

- City views!
- Reception Area
- Corner open office (can be enclosed)
- 20 by 15 feet Large Conference Room
- Conference room can be split into 2 nice offices
- Floor to ceiling windows allow for great natural light
- Esplanade-at-Locust-Point-Amenities

### ELEVENTH FLOOR PLAN



### SPACE PLAN



### HAMILTON PARTNERS - Sponsoring Broker

**David Andrews**

✉ [da@hpre.com](mailto:da@hpre.com)

C 6303270566

**Philip Sheridan**

✉ [phil\\_sheridan@hpre.com](mailto:phil_sheridan@hpre.com)

P 6307195567

C 6303032108