

**1901 Butterfield Road**  
*Suite 900*  
1901 Butterfield Road  
Downers Grove, IL 60515

**HAMILTON**  
www.hamiltonpartners.com **PARTNERS**



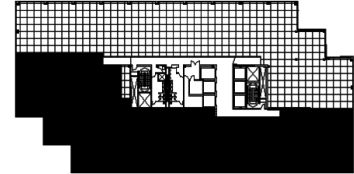
## DETAILS

**Square Feet:** 14,786 S.F.  
**Net Rent:** \$19.75/S.F.  
**OP. Expense:** \$9.34/S.F.  
**Tax:** \$2.69/S.F.  
**Gross Rent:** \$31.78/S.F.

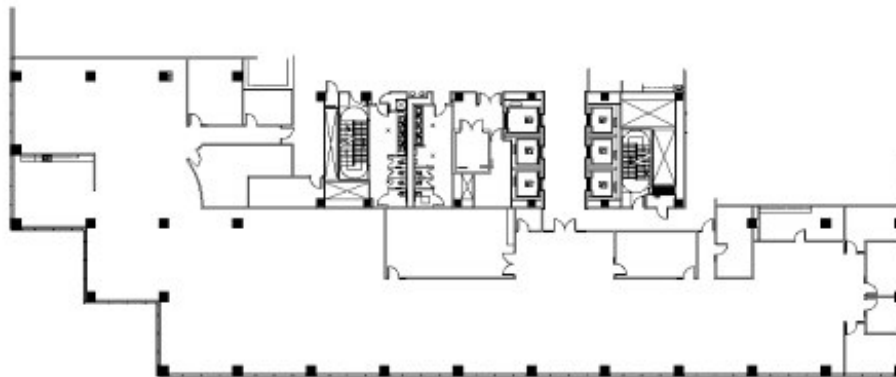
## SUITE FEATURES

- High Tech Space!
- Glass entry in elevator lobby
- Large conference/training room with raised floor provides flexible configuration
- Board room
- 2 workroom/copy rooms
- IT room with dedicated supplemental A/C
- Beautiful eat-in kitchen & breakroom
- One of the best views at Esplanade

## NINTH FLOOR PLAN



## SPACE PLAN



## HAMILTON PARTNERS - Sponsoring Broker

**David Andrews**

✉ [da@hpre.com](mailto:da@hpre.com)

C 6303270566

**Philip Sheridan**

✉ [phil\\_sheridan@hpre.com](mailto:phil_sheridan@hpre.com)

P 6307195567

C 6303032108