

1901 Butterfield Road  
Suite 640&650  
Downers Grove, IL 60515



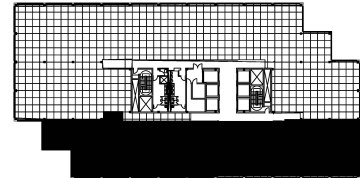
### DETAILS

**Square Feet:** 10,164 S.F.  
**Net Rent:** \$19.75/S.F.  
**OP. Expense:** \$9.89/S.F.  
**Tax:** \$2.62/S.F.  
**Gross Rent:** \$32.26/S.F.

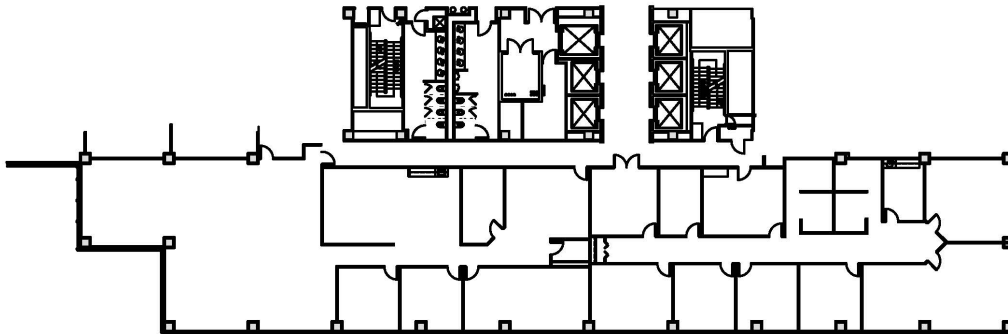
### SUITE FEATURES

- Great Space with nice reception
- 3 private offices
- 2 glass walled conference rooms
- Kitchen area
- Workroom
- Open Area for workstations
- Northern and Western views

### SIXTH FLOOR FLOOR PLAN



### SPACE PLAN



### HAMILTON PARTNERS - Sponsoring Broker

**Gary Mori**

[✉ gary\\_mori@hpre.com](mailto:gary_mori@hpre.com)

P 630-719-5560

F 630-719-5570

**Philip Sheridan**

[✉ phil\\_sheridan@hpre.com](mailto:phil_sheridan@hpre.com)

P 6307195567

C 6303032108

**David Andrews**

[✉ da@hpre.com](mailto:da@hpre.com)

C 6303270566