

1901 Butterfield Road

Suite 905

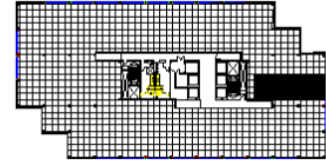
1901 Butterfield Road, Downers Grove, IL
60515



SUITE FEATURES

- Efficient office layout for open office users!
- Internal multi function room can function as conference room and work room
- Beautiful views of landscaping & complex
- Furniture available
- Esplanade-at-Locust-Point-Amenities

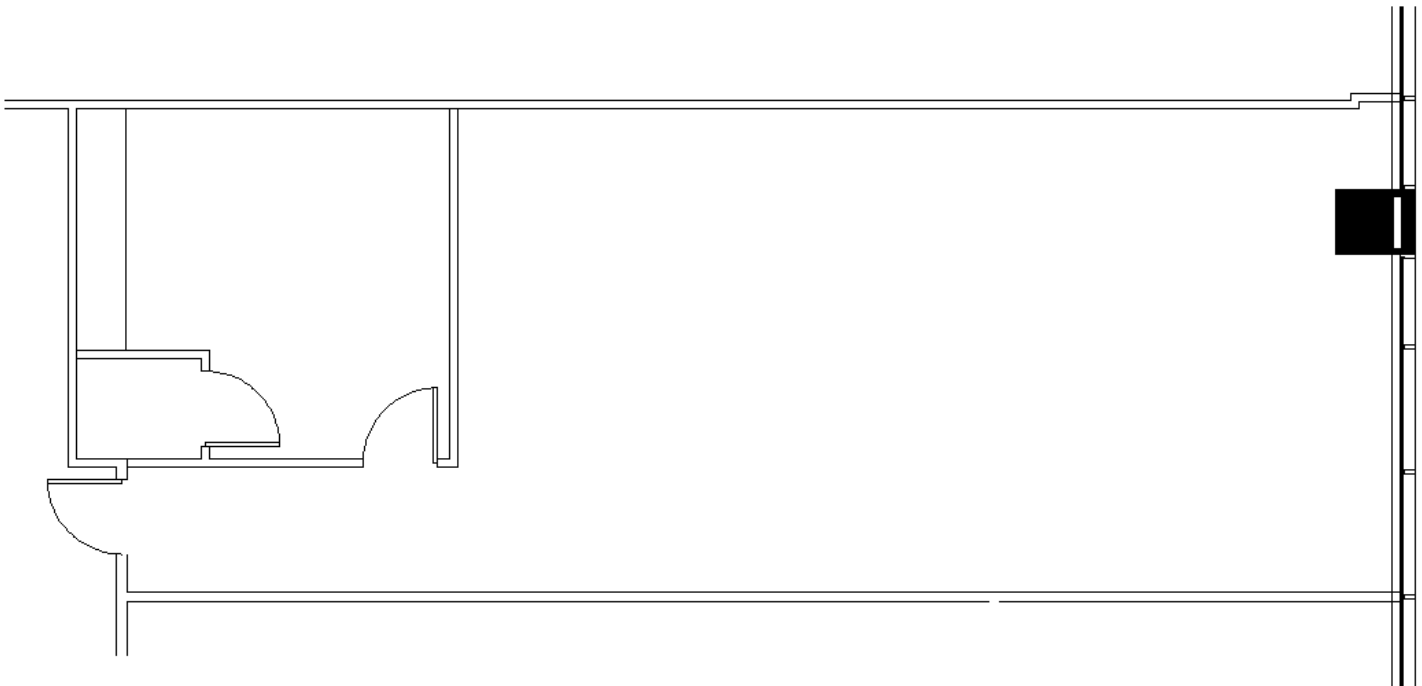
NINTH FLOOR PLAN



DETAILS

Square Feet: 1,213 S.F.
Net Rent: \$19.75/S.F.
OP. Expense: \$9.89/S.F.
Tax: \$2.62/S.F.
Gross Rent: \$32.26/S.F.

SPACE PLAN



HAMILTON PARTNERS - Sponsoring Broker

David Andrews

✉ da@hpre.com

C 6303270566

Philip Sheridan

✉ phil_sheridan@hpre.com

P 6307195567

C 6303032108