

1901 Butterfield Road
Suite 305
Downers Grove, IL 60515



DETAILS

Square Feet: 5,511 S.F.
Net Rent: \$19.75/S.F.
OP. Expense: \$9.76/S.F.
Tax: \$2.97/S.F.
Gross Rent: \$32.48/S.F.

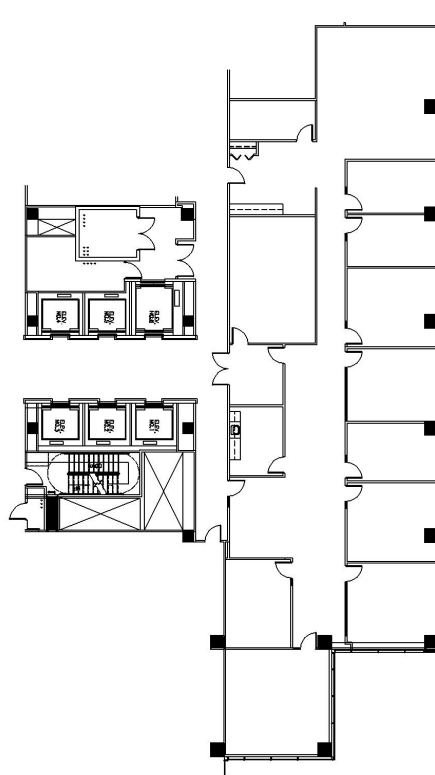
SUITE FEATURES

- Glass entry in elevator lobby
- Corner space with great window line
- Conference room
- Kitchen
- 9 private offices
- Esplanade-at-Locust-Point-Amenities

THIRD FLOOR PLAN



SPACE PLAN



HAMILTON PARTNERS - Sponsoring Broker

Philip Sheridan

✉ phil_sheridan@hpre.com

P 6307195567

C 6303032108

David Andrews

✉ da@hpre.com

C 6303270566